

# STREET Art

In the tenure of the association with St+Art India Foundation for the last six years, we have worked on various street art projects across the country with a mutual hope to make art more accessible to the public. Our aim is to add colour and create a vibrant and happy environment in India.

We support the Foundation and the artists and are extremely proud to be associated with this initiative. We believe this will bring a change and transform the cityscape drastically through art.

Cities covered – Mumbai, Delhi, Goa, Chennai, Coimbatore, Guwahati, Mokochung (Nagaland), Ahmedabad, Patna and Kolkata.



#MoonInMumbai

Asian Paints & Sideways in collaboration with St+Art created a Lunar Dome at Nehru Planetarium. The colossal Moon installation is a tribute to the team at ISRO for their Chandrayaan missions.



Harbouring Hope

This beautiful mural was created as an emblem of hope in the midst of displacement and migration. It is dedicated to inhabitants of the area who had to move from the coast of Kannagi Nagar after the devastating tsunami of 2004.

Kashmira Sarode. Location - Chennai

**Asian Paints Limited**  
House 6A, Shantinagar, Santacruz East, Mumbai  
Maharashtra 400055  
Tel: 022 6218 1000 | Fax: 022 6218 1111



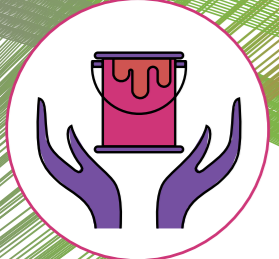
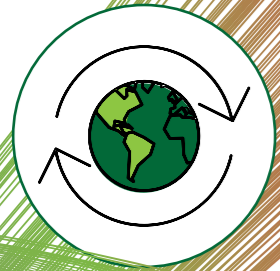
Community



Health & Safety



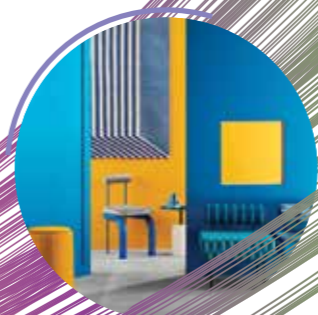
Environment



Product Stewardship



## Advancing on the Sustainability Learning Curve



This report is printed on 100% recycled paper



# PRODUCT STEWARDSHIP



## NILAYA NATURALS

Nilaya Naturals is the First of its kind paint, formulated with over 95% natural materials or materials of natural origin

## ULTIMA PROTEK LAMINO

Ultima Protek Lamino is the First of its kind 2-pack water-based polyurethane clear coat with enhanced self-cleaning properties



## USE OF RENEWABLE RESOURCES INCREASED

Renewable content in three large-volume products - Ace Exterior Emulsion, Tractor Emulsion Advanced, and Apcolite Enamel - was increased from its current level by 20 to 60% from the prevalent levels.



## TECHNOLOGY SHRINKS OUR CARBON FOOTPRINT

Both formulation engineering at R&T and process engineering at manufacturing resulted in significant rutile savings, which directly means a smaller carbon footprint. In FY2019-20, the net carbon footprint reduction through rutile savings was approximately 11000 MT CO<sub>2</sub>e.



## ELIMINATING LEAD IN PAINTS / Pb <90 PPM

It has been more than a decade since we discontinued the use of lead-based raw materials in household and decorative paints.



# ENVIRONMENT

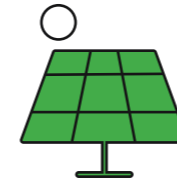
**969 million**

Litres of water replenished in FY2019-20



**42 million**

Units of electricity consumed in FY2019-20 from renewable sources



**50%**

reduction in specific hazardous waste disposal as compared to FY2013-14



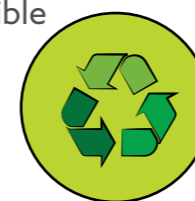
**57.38%**

of electricity consumed from renewable sources



**1800000+**

kgs of post-consumer flexible plastic packaging diverted away from municipal landfill and water bodies

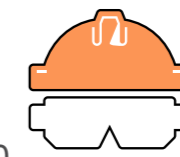


# HEALTH & SAFETY



**17,800+**

Safe Unsafe Act (SUSA) conversations in FY2019-20 for promoting a safety culture



**15 crores+**

Spent in ensuring engineering control through safety capex in FY2019-20



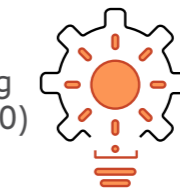
**56,900+**

Training man-hours invested in health and safety capabilities during FY2019-20



**28,400+**

Proactive reporting (leading indicators during FY2019-20)



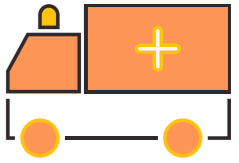
Asian Paints Rohtak factory won the 'Excellence in Safety - 2019' award in the Large Industry category, presented by Manufacturing Today at the national level



# COMMUNITY

**2,00,000+**

treatments through various health initiatives



**28,500+**

beneficiaries directly impacted through our education initiatives in FY2019-20



**1,47,400+**

Participants attended training sessions at the Asian Paints Colour Academy



Naya Savera, our programme which helps transform the lives of school dropouts. Directly impacted over **750** beneficiaries



Naya Savera mentor-mentee interaction

**7600+**

hours were contributed by employees in volunteering

